

Osmo **C2** Truss™

The Next Generation

The

revolutionary

pole

restoration

system

designed to

lower

replacement

costs for

utility

companies



Osmose®

A Major Breakthrough in C-Truss™ Design Lowers Costs

The new Osmo-C2-Truss™ pole restoration system compliments the success of the original Osmo-C-Truss™ and its more than four decades of extensive field applications.

Today, the art and technology of steel truss design has advanced.

Through the use of a sophisticated Finite Element Analysis, the cross-sectional shape has been optimized resulting in less twist, while higher strength steel has improved the efficiency of the truss.

The result is the Osmo-C2-Truss, which is stronger, more efficient and lighter in weight than other steel truss systems.

This innovative design enables Osmose to lower costs for our customers. The volatility of the steel market has forced the price of steel trusses to increase at an unprecedented rate. The Osmo-C2-Truss can offer significant cost savings to utility companies compared to other restoration systems.

Lighter

Stronger

Lower

Cost

Osmo
C2
Truss™

Osmose®

Osmo **C2** Truss™

Lighter

Stronger

Lower

Cost

Lighter weight, higher strength, lower cost

The optimized truss design provides the highest strength-to-weight ratio in the industry at a lower cost than other systems.

Patented design

Finite Element Analyses were used to optimize the cross-sectional shape and maximize the efficiency of the design.

Reduced rotation

The patented design concept enables the C2-Truss™ to minimize the twisting caused by transverse wind loads that reduce the performance of other truss shapes.

Engineered for safety and reliability

The Osmo-C2-Truss is formed from 100,000 psi yield steel and is installed to exceed the strength requirements of the National Electric Safety Code.

Higher yield strength steel

High strength steel combined with an optimized design allows the truss to develop its full strength potential. The high strength-to-weight ratio helps lower overall weight and cost.

Low profile

The unique design of the Osmo-C2-Truss results in a lower profile on the pole.

Longer lengths for high decay

The standard truss extends 5 feet above ground. Single piece trusses are available for applications up to 8 feet above ground. A two-piece design is available for taller applications.

Galvanized for corrosion protection

Every Osmo-C2-Truss is hot-dip galvanized to ASTM A-123 specifications, ensuring long term corrosion protection.

High strength banding

Osmose banding is stronger than other banding systems in the industry with more than 138,000 psi tensile strength. The banding is hot-dip galvanized to 2.0 ounces per square foot (two to three times heavier than others) for long-term corrosion protection.

Low cost and reduces risk

Pole restoration is a third or less of the cost of pole replacement. A successful program can save a utility millions of dollars. Deteriorated poles also present a hazard to the public. Pole restoration reduces this risk by restoring poles to equivalent new pole strength.

Proven performance

The Osmo-C-Truss has been extensively tested throughout its 40 year history. Tests have been performed by Osmose, independent laboratories and pole owners nationwide. Since its introduction in the early 1960's, no other pole restoration system has a comparable history of success in actual field applications.



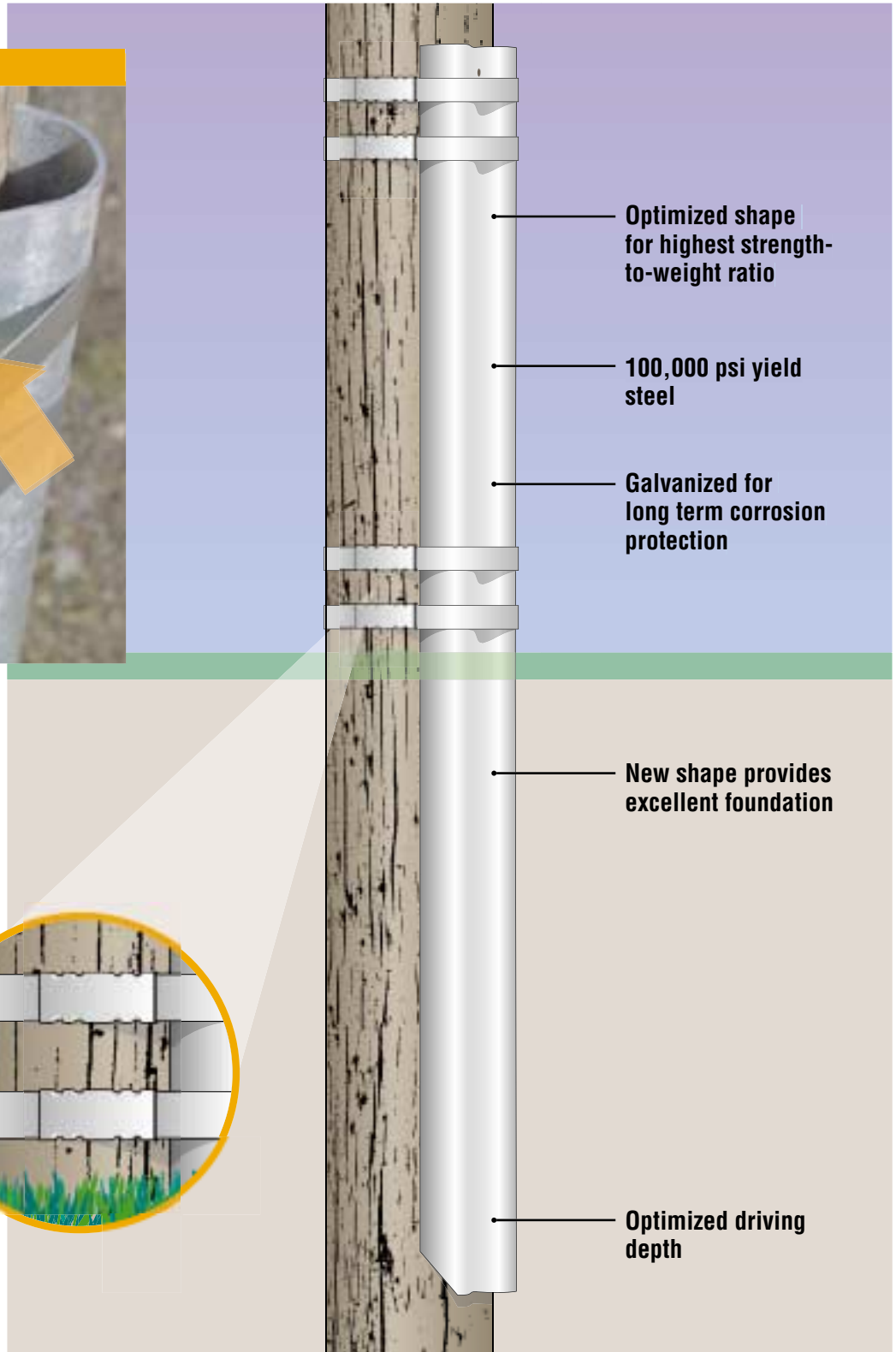
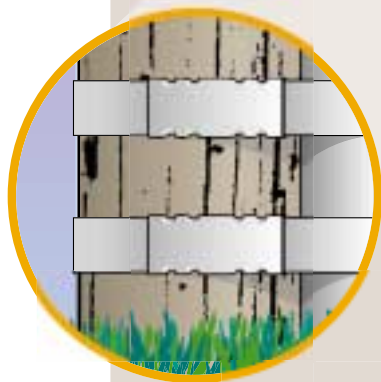
The Osmo-C2-Truss™ Low Profile Design for Maximum Efficiency

Design Features



- Patented design moves shear center closer to the pole resulting in less twist and higher strength

- Galvanized banding provides 138,000 psi tensile strength



Unique Truss Design Outperforms Other Systems

In developing the unique Osmo-C2-Truss, Osmose engineers thoroughly tested and evaluated various shapes and designs, as well as different yield strength steels. This comprehensive research and development effort resulted in the optimized cross-sectional shape of the revolutionary Osmo-C2-Truss which captures the advantage of higher yield strength steel.

The Osmo-C2-Truss is the most technologically advanced truss system on the market, with the highest strength-to-weight ratio in the industry. It is stronger, less prone to twist, weighs less and performs better than traditional open section trusses.

Lighter

Stronger

Lower

Cost

Strength Comparison Chart

Pole	C-Truss		Others		C2-Truss	
	Weight	Strength/lb.	Weight	Strength/lb.	Weight	Strength/lb.
35' Class 5 Pole	126 lb.	290 ft.-lb.	119 lb.	294 ft.-lb.	79 lb.	463 ft.-lb.
40' Class 4 Pole	172 lb.	321 ft.-lb.	154 lb.	364 ft.-lb.	95 lb.	522 ft.-lb.
40' Class 5 Pole	172 lb.	321 ft.-lb.	154 lb.	364 ft.-lb.	95 lb.	522 ft.-lb.
45' Class 5 Pole	172 lb.	321 ft.-lb.	154 lb.	364 ft.-lb.	102 lb.	553 ft.-lb.



A **Leader** in Wood Pole Restoration Solutions

Protect

Assets

Save

Money

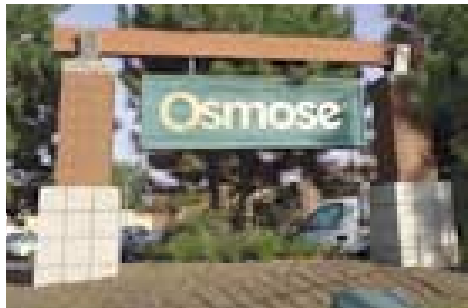
Osmose helps you save money by maintaining and restoring poles and avoiding unnecessary replacements. The Osmo-C-Truss is the most widely-used restoration system in North America, with more than one million installations and hundreds of users. Osmose engineering and research groups develop services and products that help to extend the useful life cycles of utility wood and metal poles, towers, transformer cabinets, telecommunication cables, grounding systems, anchors and guys. Osmose data services offer professional field surveys, data maintenance, on-site office support, data integration services and FastGate® software.

Services:

- Pole Inspection & Remedial Treatment Services
- Corrosion Investigation and Repairs for Steel Towers and Poles
- Grounding System & Stray Voltage Inspection
- Integrated Vegetation Management Services
- Padmount Transformer Inspection
- Joint Use/Streetlight Surveys
- Network Connectivity
- Code Violations, Reliability and Safety Inspections
- On-site Office Support
- Data Integration Services

Software:

- FastGate® Mobile
- FastGate Manager™ Applications
- FastGate Viewer™
- O-Calc® for Pole Load Analysis Software



Osmose®

Osmose Utilities Services, Inc.
980 Ellicott Street
Buffalo, NY 14209
Phone: 1-800-877-POLE (7653) ext. 3273
Fax: 716-882-7822
Web: www.osmose.com

The trademarks used herein are registered and unregistered trademarks of S-T-N Holdings, Inc. and are used under license.
Pat. Pending.